

**Principal Dimensions:**

Length overall	8.25 m
Length (hull)	7.00 m
Breadth overall	2.80 m
Breadth (hull)	2.13 m
Draught (engines down)	0.90 m
Displacement (light)	1.80 tonnes
Max Payload	0.75 tonnes
Tube diameter	550 mm
Tanks	Fuel
	0.30 m <sup>3</sup>

**STANDARD SUPPLY****Certification and Class:**

U.K. MCA 'SCV' Code Category 4.

**Hull and Deck Structure:**

Inflatable collar

'Compressor' foredeck with  
anchor/warp stowage under  
Flush hatch to under deck store

**Superstructure:**

Open boat with aft console and bench  
Helm/navigation console with port  
helm position

Aft "A" frame

**Finishes**

Exterior marine epoxy system  
Self-adhesive plastic lettering to stern  
Anode style cathodic protection  
Non slip deck area

**Propulsion:**

Twin Suzuki DF140hp Outboards  
Max speed:

Twin lever controls and engine  
supplier standard  
instrumentation

**Fuel System:**

Alloy tank  
Stainless steel pipework  
Simplex filters

**Stern Gear:**

N/A

**Bilge System:**

Whale Amazon manual pump

**Deck Equipment:**

10kg Bower anchor with warp  
5kg Kedge anchor with warp  
Heavy duty mooring bollard on  
compressor deck

**Ventilation and Heating:**

N/A

**DC Systems:**

Two battery 12v DC system  
Navigation lights

**Detection and Alarms:**

N/A

**Safety Equipment:**

Life raft (Owner supply)  
Life jackets (Owner supply)  
Thermal protective aids (Owner  
supply)  
Life buoys  
Pyrotechnics(Owner supply)  
First aid kit

**Fire Fighting Equipment:**

Portable extinguishers

**Wheel house Outfit:**

N/A

**Navigation Equipment:**

Magnetic compass  
Navigation horn  
Radar reflector

**Communication Equipment:**

Icom M601 VHF-DSC

**Commissioning and Delivery:**

Basin trials at factory  
Sea trials in Milford Haven  
Delivery ex works

**OPTIONAL EQUIPMENT****Certification and Class:**

Alternative certification  
Classification Society survey

**Hull and Deck:**

Bow pusher with fairlead and pin  
Foam filled collar  
Four point lifting arrangement

**Superstructure:**

Large stowage bay fwd of console with  
seats mounted on lifting access  
hatch  
Stern platform (inboard only)

**Propulsion:**

Single outboard installations;  
Suzuki DF225/250hp  
Max speed:  
Twin outboard installations:  
Twin Suzuki DF150hp  
Max speed:  
Other makers  
Single inboard installations:  
Yanmar 6LYA 370/440hp with  
Hamilton HJ274 Water jet  
Max speed:

**Deck Equipment:**

Cargo lashing points

**DC Systems:**

12v Sockets  
Additional circuits, searchlights, etc.

**Safety Equipment:**

Life raft options  
Man overboard recovery system

**Navigation Equipment:**

Variations on that specified

**Communication Equipment:**

Variations on that specified

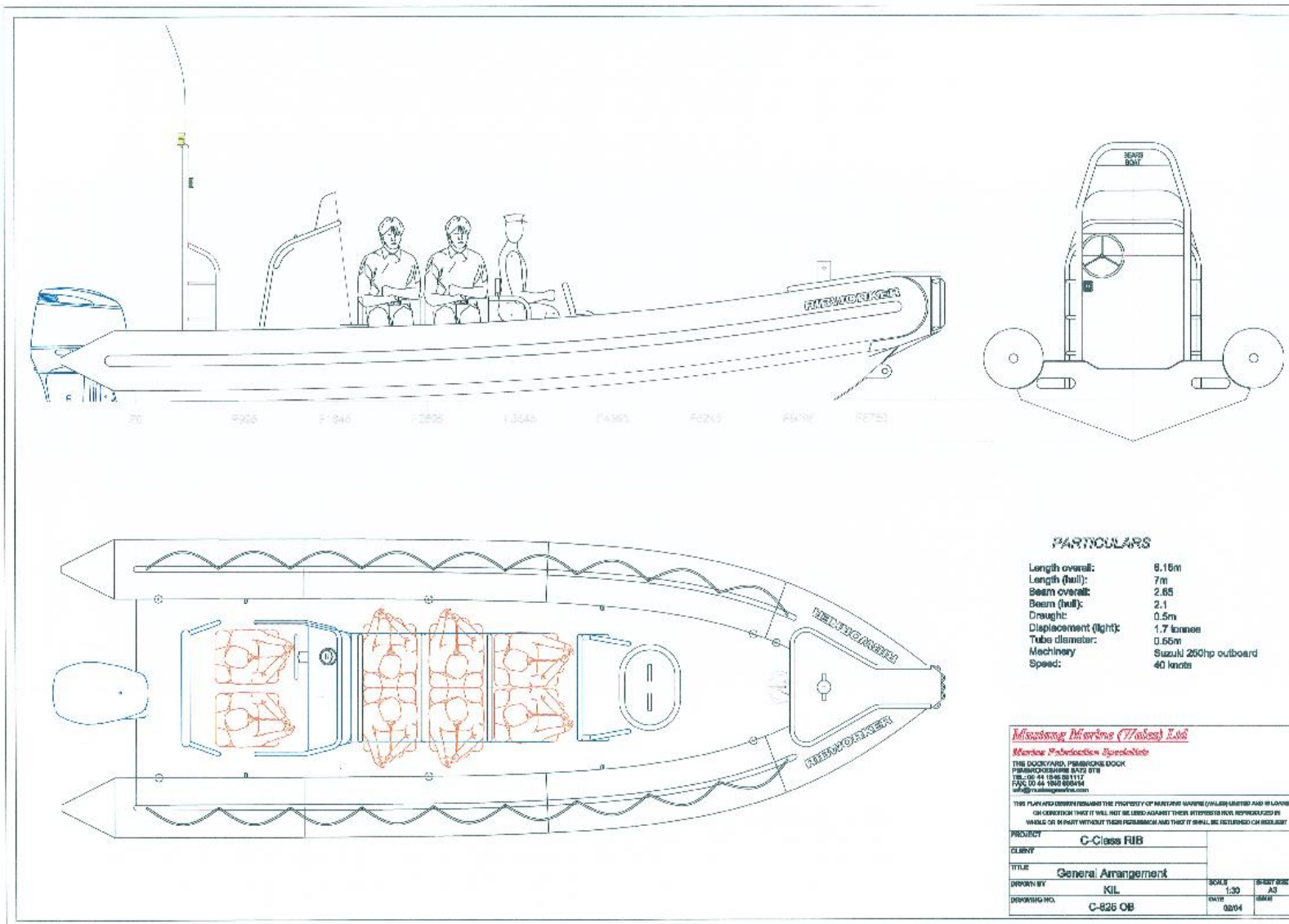
**Commissioning and Delivery:**

Delivery to destination of customer  
choice  
Spare parts  
Training

**CONTACT:**

Mustang Marine (Wales) Ltd  
The Dockyard  
Pembroke Dock  
Pembrokeshire  
SA72 6TE  
United Kingdom

☎ +44 (0) 1646 681117  
✉ [sales@mustangmarine.com](mailto:sales@mustangmarine.com)



*Mississippi Maritime (77) Inc Ltd*  
*Merica Fabricacion Avanzada*  
 THE DOCKYARD, PIMBORO DOCK  
 PIMBORO CANADA S47J 0T8  
 TEL: (514) 124-8317  
 FAX: (514) 124-8314  
 www.mississippimarine.com

THIS PLAN AND DESIGN REMAINS THE PROPERTY OF MISSISSIPPI MARINE (77) LIMITED AND IS LOANED ON CONDITION THAT IT WILL NOT BE USED AGAINST THEIR INTERESTS OR BE REPRODUCED BY WHOLE OR IN PART WITHOUT THEIR PERMISSION AND THAT IT SHALL BE RETURNED ON REQUEST.

PROJECT	C-Class RIB		
CLUB/RY			
TITLE	General Arrangement		
DRAWN BY	KIL	SCALE	1:30
DRAWING NO.	C-825 OB	DATE	02/04
		BY	AS
		CHKD	SM